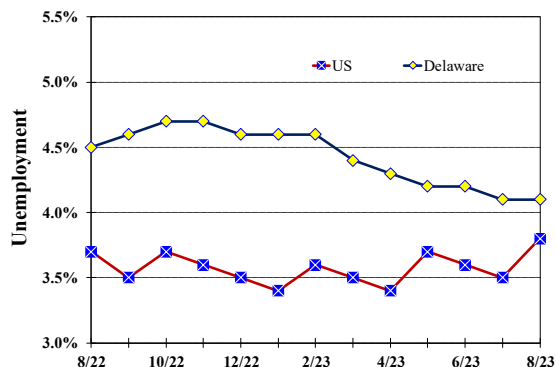


### Unemployment Rate

Delaware and US

August 2022 - August 2023



### Monthly Commentary

Delaware's August unemployment rate differs from the US unemployment rate by 0.3 percentage points, the smallest difference in rates since August 2021 when the US unemployment rate was 5.2 percent and Delaware's rate was 5.5 percent. Over-the-month, both Delaware's number of employed workers and its labor force level grew by 0.5 percent or by 2,200 and 2,400 workers, respectively. The growth in the labor force from July to August is the largest over-the-month increase since the addition of 3,000 workers in November 2020. The number of unemployed Delawareans also rose, increasing by 200, the first over-the-month increase in unemployed workers since November 2022.

### Delaware Civilian Labor Force

Delaware Residents

	Aug. 2023	July 2023	Aug. 2022
Civilian Labor Force	505,500	503,100	495,800
Employed	484,700	482,500	473,700
Unemployed	20,800	20,600	22,100
Unemployment Rate %	4.1	4.1	4.5
US Unemployment Rate %	3.8	3.5	3.7

Source: Delaware Dept. of Labor in cooperation with the US Dept. of Labor, Bureau of Labor Statistics.

### Area Unemployment Rates (%)

	Aug. 2023	July 2023	Aug. 2022
<b>New Castle County</b>	4.7	4.3	4.8
Wilmington	7.5	6.7	6.9
Newark	4.4	5.8	4.6
<b>Kent County</b>	5.4	5.1	6.0
Dover	6.8	6.7	7.6
<b>Sussex County</b>	3.9	3.5	4.2

Note: Area rates are not seasonally adjusted.

Source: Delaware Dept. of Labor in cooperation with the US Dept. of Labor, Bureau of Labor Statistics.

### Hours & Earnings

All Employee (Total Private)

	Aug. 2023	July 2023	Aug. 2022
<b>Weekly Earnings</b>	\$989.63	\$1,001.38	\$992.35
<b>Weekly Hours</b>	32.5	32.8	33.2
<b>Hourly Earnings</b>	\$30.45	\$30.53	\$29.89

Source: Delaware Dept. of Labor in cooperation with the US Dept. of Labor, Bureau of Labor Statistics.

Office of Occupational and Labor Market Information

For data questions, contact Tom Dougherty (302) 761-8062

# Delaware Labor Force Trends

Delaware's seasonally adjusted unemployment rate in August 2023 was 4.1%, unchanged from July 2023. There were 20,800 unemployed Delawareans in August 2023 compared to 22,100 in August 2022. The US unemployment rate was 3.8% in August 2023, up from 3.5% in July 2023. In August 2022, the US unemployment rate was 3.7%, while Delaware's rate was 4.5%.

In August 2023, seasonally adjusted nonfarm employment was 482,900, down from 483,300 in July 2023. Since August 2022, Delaware's total nonfarm jobs have increased by a net gain of 9,800, a rise of 2.1%. Nationally, jobs during that period increased by 2.0%.

## Delaware Nonfarm Employment

Jobs at Delaware Locations  
Seasonally Adjusted (in 000s)

INDUSTRY GROUP	Aug. 2023	July 2023	Over the Month Change	Over the Year Change†
TOTAL NONAG. EMP.	482.9	483.3	-0.4	9.8
CONSTRUCTION	24.8	24.3	0.5	1.5
MANUFACTURING	27.5	27.4	0.1	1.2
Durable Goods	10.0	10.1	-0.1	0.5
Nondurable Goods	17.5	17.3	0.2	0.7
TRADE, TRANSP., & UTIL.	90.7	91.6	-0.9	0.1
Wholesale Trade	12.2	12.3	-0.1	-0.1
Retail Trade	50.7	51.1	-0.4	0.5
Transp. & Utilities	27.8	28.2	-0.4	-0.3
INFORMATION	3.6	3.6	0.0	-0.2
FINANCIAL ACTIVITIES	50.0	49.9	0.1	0.7
PROF. & BUS. SERVICES	65.9	65.8	0.1	-0.6
PRIV. EDUCATION & HEALTH	80.6	81.1	-0.5	1.7
LEISURE & HOSPITALITY	53.0	52.8	0.2	4.8
OTHER SERVICES	17.8	17.8	0.0	-0.8
GOVERNMENT	69.0	69.0	0.0	1.4
Federal Government	6.4	6.3	0.1	0.5
State Government	32.2	32.4	-0.2	-0.2
Local Government	30.4	30.3	0.1	1.1

† Annual changes are not seasonally adjusted.  
Details may not add up due to rounding and seasonal adjustment.  
Source: US Department of Labor, Bureau of Labor Statistics.

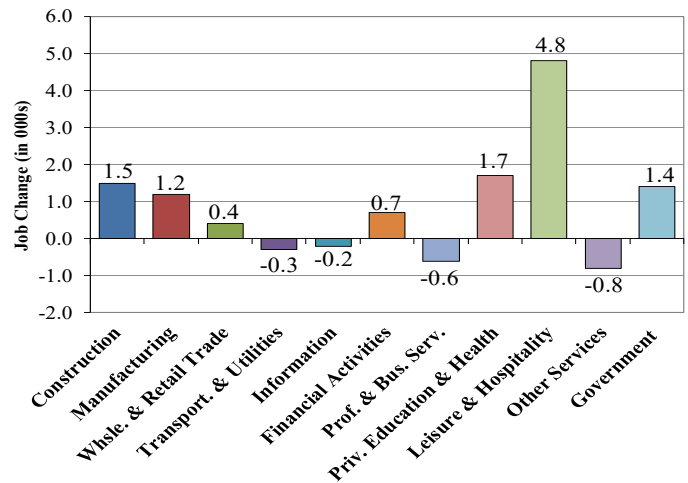
Office of Occupational and Labor Market Information

For data questions, contact Tom Dougherty (302) 761-8062

<https://labor.delaware.gov/divisions/oolmi/>

## Delaware Over-the-Year Job Change

August 2022 – August 2023



## Consumer Price Index

All Urban Consumers

	Percent Change to Aug. 2023 from:		
	Aug. 2022	June 2023	July 2023
US City Average	3.7	0.6	0.4
Phila.-Camden-Wilm.*	3.9	0.8	NA

\* Data are published on a bi-monthly basis.

## Delaware Annual Net Job Change

Annual Average 2002–2022

