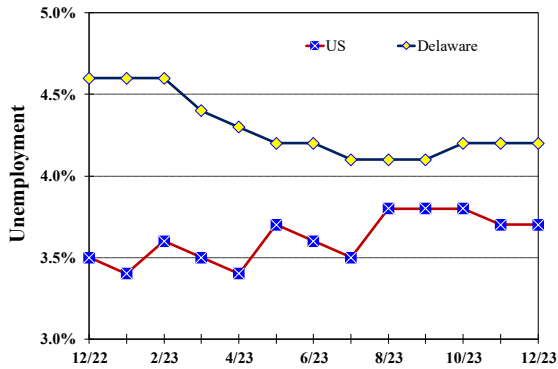


Unemployment Rate

Delaware and US

December 2022 - December 2023



Monthly Commentary

In December 2023, Delaware’s seasonally adjusted average hourly wage rose to \$31.54 for private sector workers, the highest level since October 2023, when the wage was \$31.30. December’s average hourly wage increased \$0.59 over the prior month and rose by \$1.69 over-the-year. Total not seasonally adjusted Nonfarm jobs were 9,600 higher than in December 2022. Three-fourths of the over-the-year job growth came from just two industries, Private Education and Healthcare and Leisure and Hospitality, whose over-the-year growth each increased by 3,700 or by 4.7 and 7.9 percent, respectively.

Delaware Civilian Labor Force

Delaware Residents

	Dec. 2023	Nov. 2023	Dec. 2022
Civilian Labor Force	511,100	510,100	495,400
Employed	489,400	488,500	472,400
Unemployed	21,700	21,600	23,000
Unemployment Rate %	4.2	4.2	4.6
US Unemployment Rate %	3.7	3.7	3.5

Source: Delaware Dept. of Labor in cooperation with the US Dept. of Labor, Bureau of Labor Statistics.

Area Unemployment Rates (%)

	Dec. 2023	Nov. 2023	Dec. 2022
New Castle County	3.5	3.6	3.9
Wilmington	5.4	5.5	5.1
Newark	3.5	3.8	3.7
Kent County	4.1	4.2	4.7
Dover	5.2	5.3	5.8
Sussex County	3.9	3.8	4.5

Note: Area rates are not seasonally adjusted.

Source: Delaware Dept. of Labor in cooperation with the US Dept. of Labor, Bureau of Labor Statistics.

Hours & Earnings

All Employee (Total Private)

	Dec. 2023	Nov. 2023	Dec. 2022
Weekly Earnings	\$1,015.59	\$993.50	\$982.07
Weekly Hours	32.2	32.1	32.9
Hourly Earnings	\$31.54	\$30.95	\$29.85

Source: Delaware Dept. of Labor in cooperation with the US Dept. of Labor, Bureau of Labor Statistics.

Delaware Labor Force Trends

Delaware's seasonally adjusted unemployment rate in December 2023 was 4.2%, unchanged from November 2023. There were 21,700 unemployed Delawareans in December 2023 compared to 23,000 in December 2022. The US unemployment rate was 3.7% in December 2023, unchanged from November 2023. In December 2022, the US unemployment rate was 3.5%, while Delaware's rate was 4.6%.

In December 2023, seasonally adjusted nonfarm employment was 486,400, up from 486,300 in November 2023. Since December 2022, Delaware's total nonfarm jobs have increased by a net gain of 9,600, a rise of 2.0%. Nationally, jobs during that period increased by 1.9%.

Delaware Nonfarm Employment

Jobs at Delaware Locations
Seasonally Adjusted (in 000s)

INDUSTRY GROUP	Dec. 2023	Nov. 2023	Over the Month Change	Over the Year Change†
TOTAL NONAG. EMP.	486.4	486.3	0.1	9.6
CONSTRUCTION	24.1	24.4	-0.3	0.3
MANUFACTURING	27.8	27.9	-0.1	1.5
Durable Goods	9.9	10.0	-0.1	0.3
Nondurable Goods	17.9	17.9	0.0	1.2
TRADE, TRANSP., & UTIL.	89.2	88.8	0.4	-1.6
Wholesale Trade	12.2	12.2	0.0	-0.4
Retail Trade	49.9	49.4	0.5	0.0
Transp. & Utilities	27.1	27.2	-0.1	-1.2
INFORMATION	3.5	3.5	0.0	-0.2
FINANCIAL ACTIVITIES	50.3	50.2	0.1	0.5
PROF. & BUS. SERVICES	67.3	68.1	-0.8	0.6
PRIV. EDUCATION & HEALTH	82.3	81.9	0.4	3.7
LEISURE & HOSPITALITY	54.3	54.3	0.0	3.7
OTHER SERVICES	17.8	17.7	0.1	-0.8
GOVERNMENT	69.8	69.5	0.3	1.9
Federal Government	6.6	6.5	0.1	0.6
State Government	32.7	32.6	0.1	0.6
Local Government	30.5	30.4	0.1	0.7

† Annual changes are not seasonally adjusted.
Details may not add up due to rounding and seasonal adjustment.
Source: US Department of Labor, Bureau of Labor Statistics.

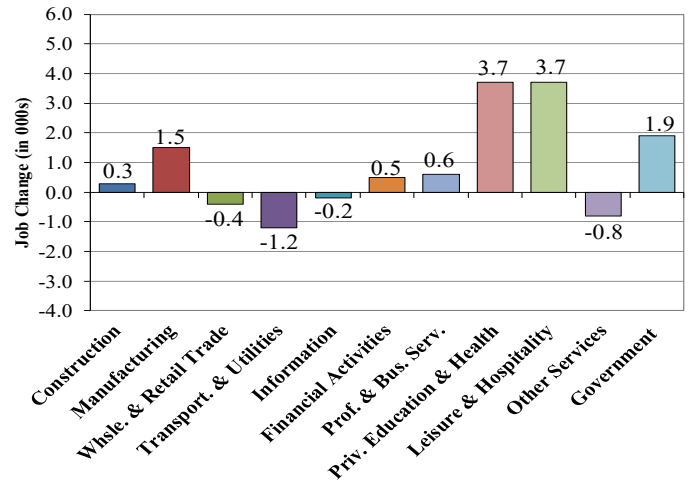
Office of Occupational and Labor Market Information

For data questions, contact Tom Dougherty (302) 761-8062

<https://lmi.delaware.gov/>

Delaware Over-the-Year Job Change

December 2022 – December 2023



Consumer Price Index

All Urban Consumers

	Percent Change to Dec. 2023 from:		
	Dec. 2022	Oct. 2023	Nov. 2023
US City Average	3.4	-0.3	-0.1
Phila.-Camden-Wilm.*	3.9	0.0	NA

* Data are published on a bi-monthly basis.

Delaware Annual Net Job Change

Annual Average 2002–2022

