

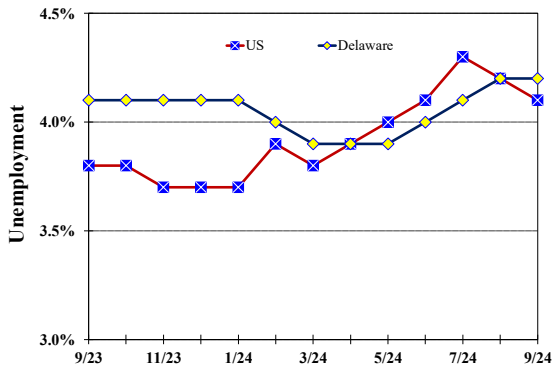
September 2024

Published October 18, 2024

Unemployment Rate

Delaware and US

September 2023 – September 2024



Monthly Commentary

Delaware’s seasonally adjusted labor force participation (LFP) rate continued its 11-month downward trend in September, tying April 2020 for the lowest recorded rate since record-keeping began in 1976 at 59.5. The national LFP rate, 62.7, was 3.2 percentage points higher than Delaware’s rate, representing the largest monthly percentage point difference between the US and Delaware rates since April 2010 when the gap was 3.4. September’s civilian population aged 16 and older increased by 13,300 over the year in Delaware. By comparison, the number of workers in Delaware’s labor force declined by 4,700 over the same period, resulting in the State’s lower LFP rate.

Delaware Civilian Labor Force

Delaware Residents

	Sept. 2024	Aug. 2024	Sept. 2023
Civilian Labor Force	504,800	505,100	509,500
Employed	483,800	483,800	488,900
Unemployed	21,000	21,300	20,600
Unemployment Rate %	4.2	4.2	4.1
US Unemployment Rate %	4.1	4.2	3.8

Source: Delaware Dept. of Labor in cooperation with the US Dept. of Labor, Bureau of Labor Statistics.

Area Unemployment Rates (%)

	Sept. 2024	Aug. 2024	Sept. 2023
New Castle County	3.4	4.8	3.9
Wilmington	5.5	7.5	5.9
Newark	3.5	5.3	3.4
Kent County	3.9	5.6	4.3
Dover	5.1	7.6	5.7
Sussex County	3.1	4.0	3.7

Note: Area rates are not seasonally adjusted.

Source: Delaware Dept. of Labor in cooperation with the US Dept. of Labor, Bureau of Labor Statistics.

Hours & Earnings

All Employee (Total Private)

	Sept. 2024	Aug. 2024	Sept. 2023
Weekly Earnings	\$1,037.08	\$1,018.81	\$992.26
Weekly Hours	32.5	32.2	32.3
Hourly Earnings	\$31.91	\$31.64	\$30.72

Source: Delaware Dept. of Labor in cooperation with the US Dept. of Labor, Bureau of Labor Statistics.

Office of Occupational and Labor Market Information

For data questions, contact Tom Dougherty (302) 761-8062

Delaware Labor Force Trends

Delaware's seasonally adjusted unemployment rate in September 2024 was 4.2%, unchanged from August 2024. There were 21,000 unemployed Delawareans in September 2024 compared to 20,600 in September 2023. The US unemployment rate was 4.1% in September 2024, down from 4.2% in August 2024. In September 2023, the US unemployment rate was 3.8%, while Delaware's rate was 4.1%.

In September 2024, seasonally adjusted nonfarm employment was 489,800, up from 489,000 in August 2024. Since September 2023, Delaware's total nonfarm jobs have increased by a net gain of 4,500, a rise of 0.9%. Nationally, jobs during that period increased by 1.5%.

Delaware Nonfarm Employment

Jobs at Delaware Locations
Seasonally Adjusted (in 000s)

INDUSTRY GROUP	Sept. 2024	Aug. 2024	Over the Month Change	Over the Year Change†
TOTAL NONAG. EMP.	489.8	489.0	0.8	4.5
CONSTRUCTION	24.5	24.1	0.4	0.8
MANUFACTURING	27.7	27.6	0.1	0.3
Durable Goods	8.5	8.5	0.0	-0.3
Nondurable Goods	19.2	19.1	0.1	0.6
TRADE, TRANSP., & UTIL.	88.8	89.1	-0.3	-1.1
Wholesale Trade	12.6	12.6	0.0	0.0
Retail Trade	51.2	51.1	0.1	-0.3
Transp. & Utilities	25.0	25.4	-0.4	-0.8
INFORMATION	3.4	3.4	0.0	-0.2
FINANCIAL ACTIVITIES	51.4	50.9	0.5	1.0
PROF. & BUS. SERVICES	65.8	65.7	0.1	1.1
PRIV. EDUCATION & HEALTH	84.8	85.0	-0.2	1.3
LEISURE & HOSPITALITY	51.8	51.7	0.1	-0.9
OTHER SERVICES	19.3	19.5	-0.2	0.3
GOVERNMENT	72.3	72.0	0.3	1.9
Federal Government	6.7	6.6	0.1	0.4
State Government	35.4	35.1	0.3	1.3
Local Government	30.2	30.3	-0.1	0.2

† Annual changes are not seasonally adjusted.
Details may not add up due to rounding and seasonal adjustment.
Source: US Department of Labor, Bureau of Labor Statistics.

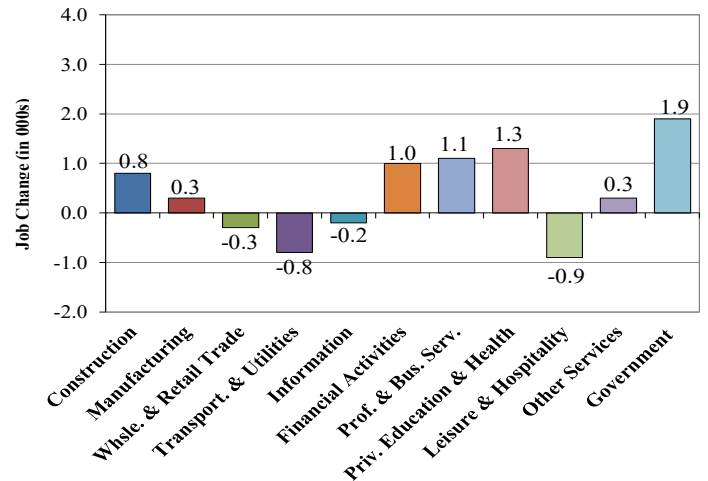
Office of Occupational and Labor Market Information

For data questions, contact Tom Dougherty (302) 761-8062

<https://lmi.delaware.gov/>

Delaware Over-the-Year Job Change

September 2023 – September 2024



Consumer Price Index

All Urban Consumers

	Percent Change to Sept. 2024 from:		
	Sept. 2023	July 2024	Aug. 2024
US City Average	2.4	0.2	0.2
Phila.-Camden-Wilm.*	NA	NA	NA

* Data are published on a bi-monthly basis.

Delaware Annual Net Job Change

Annual Average 2003–2023

