

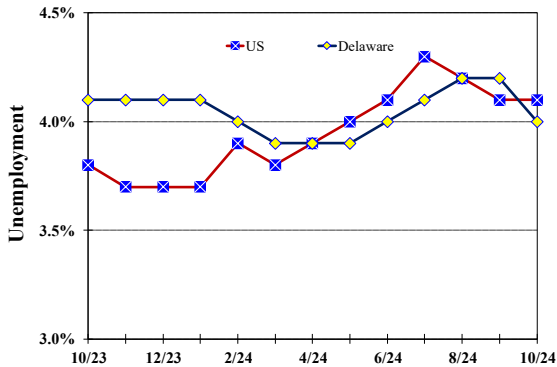
October 2024

Published November 15, 2024

Unemployment Rate

Delaware and US

October 2023 – October 2024



Monthly Commentary

Delaware’s total private sector average hourly wages grew to \$31.57 in October, an over-the-year (OTY) hourly increase of \$0.32 or 1.0 percent, the slowest pace of OTY wage growth since April. Workers in Delaware’s largest employment industry, the Trade, Transportation, and Utilities supersector, had the greatest average hourly wage increase from a year ago, growing to \$25.88, an increase of \$1.48 or 6.1 percent. The Manufacturing and Leisure and Hospitality sectors had the second and third-largest over-the-year average hourly wage increases, rising by 3.1 percent and 2.1 percent to \$34.20 and \$19.64, respectively. Financial Activities workers had the highest average hourly wage at \$37.88 but saw the largest over-the-year decline of \$0.64 or 1.7%.

Delaware Civilian Labor Force

Delaware Residents

	Oct. 2024	Sept. 2024	Oct. 2023
Civilian Labor Force	504,000	504,800	509,900
Employed	483,800	483,800	489,000
Unemployed	20,200	21,000	20,900
Unemployment Rate %	4.0	4.2	4.1
US Unemployment Rate %	4.1	4.1	3.8

Source: Delaware Dept. of Labor in cooperation with the US Dept. of Labor, Bureau of Labor Statistics.

Area Unemployment Rates (%)

	Oct. 2024	Sept. 2024	Oct. 2023
New Castle County	3.3	3.5	3.9
Wilmington	5.4	5.6	6.0
Newark	3.3	3.5	4.1
Kent County	3.8	3.9	4.5
Dover	4.7	5.1	5.9
Sussex County	3.2	3.1	3.8

Note: Area rates are not seasonally adjusted.

Source: Delaware Dept. of Labor in cooperation with the US Dept. of Labor, Bureau of Labor Statistics.

Hours & Earnings

All Employee (Total Private)

	Oct. 2024	Sept. 2024	Oct. 2023
Weekly Earnings	\$1,026.03	\$1,036.15	\$1,018.75
Weekly Hours	32.5	32.4	32.6
Hourly Earnings	\$31.57	\$31.98	\$31.25

Source: Delaware Dept. of Labor in cooperation with the US Dept. of Labor, Bureau of Labor Statistics.

Office of Occupational and Labor Market Information

For data questions, contact Tom Dougherty (302) 761-8062

Delaware Labor Force Trends

Delaware's seasonally adjusted unemployment rate in October 2024 was 4.0%, down from 4.2% in September 2024. There were 20,200 unemployed Delawareans in October 2024 compared to 20,900 in October 2023. The US unemployment rate was 4.1% in October 2024, unchanged from September 2024. In October 2023, the US unemployment rate was 3.8%, while Delaware's rate was 4.1%.

In October 2024, seasonally adjusted nonfarm employment was 488,000, down from 489,400 in September 2024. Since October 2023, Delaware's total nonfarm jobs have increased by a net gain of 2,600, a rise of 0.5%. Nationally, jobs during that period increased by 1.3%.

Delaware Nonfarm Employment

Jobs at Delaware Locations
Seasonally Adjusted (in 000s)

INDUSTRY GROUP	Oct. 2024	Sept. 2024	Over the Month Change	Over the Year Change†
TOTAL NONAG. EMP.	488.0	489.4	-1.4	2.6
CONSTRUCTION	25.1	24.6	0.5	1.4
MANUFACTURING	27.8	27.8	0.0	0.1
Durable Goods	8.5	8.5	0.0	-0.4
Nondurable Goods	19.3	19.3	0.0	0.5
TRADE, TRANSP., & UTIL.	89.0	89.0	0.0	-0.6
Wholesale Trade	12.6	12.6	0.0	0.0
Retail Trade	51.2	51.2	0.0	0.1
Transp. & Utilities	25.2	25.2	0.0	-0.7
INFORMATION	3.5	3.4	0.1	-0.1
FINANCIAL ACTIVITIES	50.3	50.9	-0.6	-0.2
PROF. & BUS. SERVICES	64.2	65.3	-1.1	-0.3
PRIV. EDUCATION & HEALTH	84.9	84.9	0.0	0.9
LEISURE & HOSPITALITY	51.8	52.0	-0.2	-0.8
OTHER SERVICES	19.2	19.3	-0.1	0.3
GOVERNMENT	72.2	72.2	0.0	1.9
Federal Government	6.7	6.7	0.0	0.3
State Government	34.9	35.0	-0.1	0.9
Local Government	30.6	30.5	0.1	0.7

† Annual changes are not seasonally adjusted.
Details may not add up due to rounding and seasonal adjustment.
Source: US Department of Labor, Bureau of Labor Statistics.

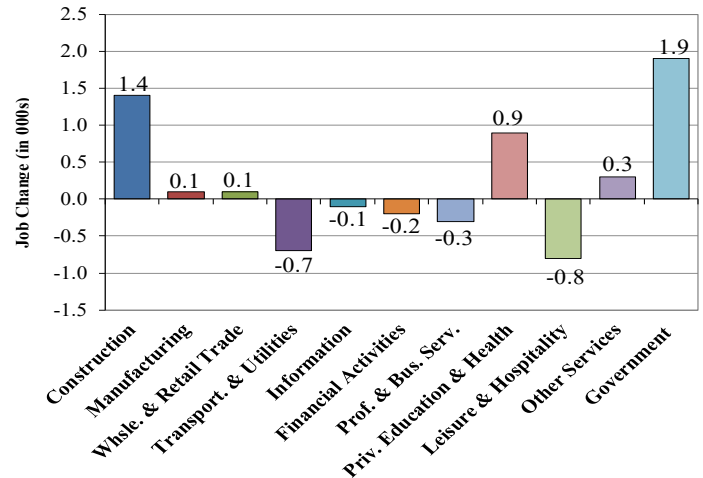
Office of Occupational and Labor Market Information

For data questions, contact Tom Dougherty (302) 761-8062

<https://lmi.delaware.gov/>

Delaware Over-the-Year Job Change

October 2023 – October 2024



Consumer Price Index

All Urban Consumers

	Percent Change to Oct. 2024 from:		
	Oct. 2023	Aug. 2024	Sept. 2024
US City Average	2.6	0.3	0.1
Phila.-Camden-Wilm.*	3.4	0.2	NA

* Data are published on a bi-monthly basis.

Delaware Annual Net Job Change

Annual Average 2003–2023

