

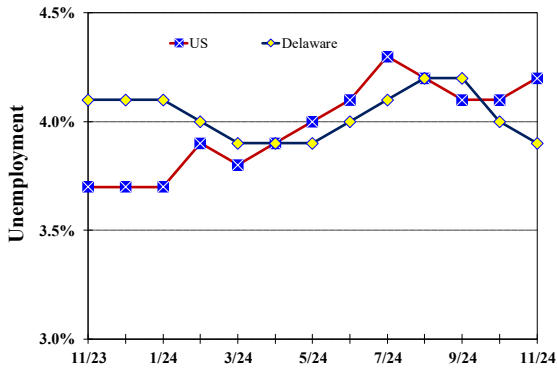
**November 2024**

Published December 20, 2024

**Unemployment Rate**

Delaware and US

November 2023 – November 2024



**Monthly Commentary**

Delaware seasonally adjusted non-farm jobs grew to 489,100, an increase of 3,700 over a year ago and 2,000 jobs higher than the previous month. Job growth in the year's second half continues to trend downward from its peak of 490,300 in May 2024. The *Private Education and Health Services* sector saw the highest over-the-year job growth, rising by 1,900 or 2.3 percent. *Hospitals and Ambulatory Services* jobs led the sector's growth, increasing by 800 and 600 jobs, respectively. *Government* jobs had the highest level of year-to-date job growth with 1,500 jobs and were second in over-the-year job growth, rising by 1,700 or 2.4 percent. The *Transportation and Utilities* industry saw the greatest job decline from a year ago, falling by 1,200 or 4.4 percent.

**Delaware Civilian Labor Force**

Delaware Residents

	Nov. 2024	Oct. 2024	Nov. 2023
Civilian Labor Force	503,200	503,900	509,700
Employed	483,700	483,700	488,800
Unemployed	19,500	20,200	20,900
Unemployment Rate %	3.9	4.0	4.1
US Unemployment Rate %	4.2	4.1	3.7

Source: Delaware Dept. of Labor in cooperation with the US Dept. of Labor, Bureau of Labor Statistics.

**Area Unemployment Rates (%)**

	Nov. 2024	Oct. 2024	Nov. 2023
<b>New Castle County</b>	3.0	3.3	3.4
Wilmington	4.7	5.4	5.2
Newark	3.0	3.3	3.6
<b>Kent County</b>	3.5	3.8	4.0
Dover	4.4	4.7	5.1
<b>Sussex County</b>	3.1	3.2	3.6

Note: Area rates are not seasonally adjusted.  
Source: Delaware Dept. of Labor in cooperation with the US Dept. of Labor, Bureau of Labor Statistics.

**Hours & Earnings**

All Employee (Total Private)

	Nov. 2024	Oct. 2024	Nov. 2023
<b>Weekly Earnings</b>	\$1,035.50	\$1,027.33	\$998.72
<b>Weekly Hours</b>	32.4	32.5	32.3
<b>Hourly Earnings</b>	\$31.96	\$31.61	\$30.92

Source: Delaware Dept. of Labor in cooperation with the US Dept. of Labor, Bureau of Labor Statistics.

**Office of Occupational and Labor Market Information**

For data questions, contact Tom Dougherty (302) 761-8062

# Delaware Labor Force Trends

Delaware's seasonally adjusted unemployment rate in November 2024 was 3.9%, down from 4.0% in October 2024. There were 19,500 unemployed Delawareans in November 2024 compared to 20,900 in November 2023. The US unemployment rate was 4.2% in November 2024, up from 4.1% in October 2024. In November 2023, the US unemployment rate was 3.7%, while Delaware's rate was 4.1%.

In November 2024, seasonally adjusted nonfarm employment was 489,100, up from 487,100 in October 2024. Since November 2023, Delaware's total nonfarm jobs have increased by a net gain of 3,700, a rise of 0.8%. Nationally, jobs during that period increased by 1.4%.

## Delaware Nonfarm Employment

Jobs at Delaware Locations  
Seasonally Adjusted (in 000s)

INDUSTRY GROUP	Nov. 2024	Oct. 2024	Over the Month Change	Over the Year Change†
TOTAL NONAG. EMP.	489.1	487.1	2.0	3.7
CONSTRUCTION	24.7	25.1	-0.4	0.9
MANUFACTURING	27.8	27.7	0.1	0.2
Durable Goods	8.3	8.4	-0.1	-0.5
Nondurable Goods	19.5	19.3	0.2	0.7
TRADE, TRANSP., & UTIL.	88.8	89.0	-0.2	-0.6
Wholesale Trade	12.7	12.7	0.0	0.1
Retail Trade	51.0	51.2	-0.2	0.5
Transp. & Utilities	25.1	25.1	0.0	-1.2
INFORMATION	3.4	3.4	0.0	-0.2
FINANCIAL ACTIVITIES	50.3	50.2	0.1	-0.2
PROF. & BUS. SERVICES	64.7	64.2	0.5	0.7
PRIV. EDUCATION & HEALTH	85.9	84.7	1.2	1.9
LEISURE & HOSPITALITY	52.0	51.6	0.4	-1.0
OTHER SERVICES	19.2	19.1	0.1	0.3
GOVERNMENT	72.3	72.1	0.2	1.7
Federal Government	6.7	6.7	0.0	0.3
State Government	35.0	34.9	0.1	0.9
Local Government	30.6	30.5	0.1	0.5

† Annual changes are not seasonally adjusted.  
Details may not add up due to rounding and seasonal adjustment.  
Source: US Department of Labor, Bureau of Labor Statistics.

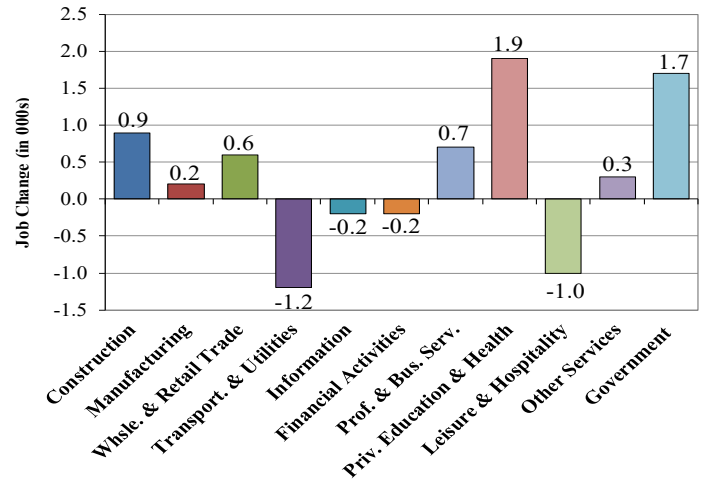
Office of Occupational and Labor Market Information

For data questions, contact Tom Dougherty (302) 761-8062

<https://lmi.delaware.gov/>

## Delaware Over-the-Year Job Change

November 2023 – November 2024



## Consumer Price Index

All Urban Consumers

	Percent Change to Nov. 2024 from:		
	Nov. 2023	Sep. 2024	Oct. 2024
US City Average	2.7	0.1	-0.1
Phila.-Camden-Wilm.*	NA	NA	NA

\* Data are published on a bi-monthly basis.

## Delaware Annual Net Job Change

Annual Average 2003–2023

