

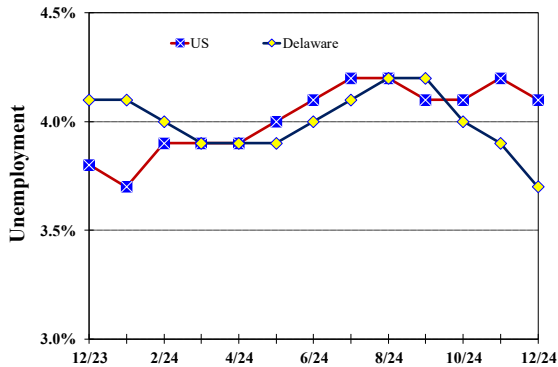
December 2024

Published January 24, 2025

Unemployment Rate

Delaware and US

December 2023 – December 2024



Monthly Commentary

The total seasonally adjusted number of workers in Delaware’s labor force fell to 502,700, a 14th consecutive month decline, and 7,000 fewer labor force participants than the prior year. December’s labor force participation (LFP) rate of 59.0 percent ends calendar year 2024 with the lowest rate since record-keeping began in 1976. The US labor force grew in December to 168.5 million, while its LFP rate remained unchanged over-the-year at 62.5 percent. The number of unemployed Delawareans, 18,800, reached its lowest level since just before the Covid-19 pandemic in February 2020 when there were 17,400 unemployed workers and the unemployment rate was 3.6 percent.

Delaware Civilian Labor Force

Delaware Residents

	Dec. 2024	Nov. 2024	Dec. 2023
Civilian Labor Force	502,700	503,300	509,700
Employed	483,900	483,800	488,800
Unemployed	18,800	19,500	20,900
Unemployment Rate %	3.7	3.9	4.1
US Unemployment Rate %	4.1	4.2	3.8

Source: Delaware Dept. of Labor in cooperation with the US Dept. of Labor, Bureau of Labor Statistics.

Area Unemployment Rates (%)

	Dec. 2024	Nov. 2024	Dec. 2023
New Castle County	3.0	3.0	3.5
Wilmington	4.7	4.7	5.3
Newark	3.6	3.0	3.4
Kent County	3.6	3.5	4.1
Dover	4.7	4.4	5.3
Sussex County	3.2	3.1	3.9

Note: Area rates are not seasonally adjusted.

Source: Delaware Dept. of Labor in cooperation with the US Dept. of Labor, Bureau of Labor Statistics.

Hours & Earnings

All Employee (Total Private)

	Dec. 2024	Nov. 2024	Dec. 2023
Weekly Earnings	\$1,065.67	\$1,034.57	\$1,014.30
Weekly Hours	32.8	32.3	32.2
Hourly Earnings	\$32.49	\$32.03	\$31.50

Source: Delaware Dept. of Labor in cooperation with the US Dept. of Labor, Bureau of Labor Statistics.

Office of Occupational and Labor Market Information

For data questions, contact Tom Dougherty (302) 761-8062

Delaware Labor Force Trends

Delaware's seasonally adjusted unemployment rate in December 2024 was 3.7%, down from 3.9% in November 2024. There were 18,800 unemployed Delawareans in December 2024 compared to 20,900 in December 2023. The US unemployment rate was 4.1% in December 2024, down from 4.2% in November 2024. In December 2023, the US unemployment rate was 3.8%, while Delaware's rate was 4.1%.

In December 2024, seasonally adjusted nonfarm employment was 489,100, down from 489,500 in November 2024. Since December 2023, Delaware's total nonfarm jobs have increased by a net gain of 2,200, a rise of 0.5%. Nationally, jobs during that period increased by 1.4%.

Delaware Nonfarm Employment

Jobs at Delaware Locations
Seasonally Adjusted (in 000s)

INDUSTRY GROUP	Dec. 2024	Nov. 2024	Over the Month Change	Over the Year Change†
TOTAL NONAG. EMP.	489.1	489.5	-0.4	2.2
CONSTRUCTION	24.6	24.8	-0.2	1.0
MANUFACTURING	27.9	27.8	0.1	0.0
Durable Goods	8.4	8.3	0.1	-0.4
Nondurable Goods	19.5	19.5	0.0	0.4
TRADE, TRANSP., & UTIL.	88.5	88.6	-0.1	-1.1
Wholesale Trade	12.6	12.7	-0.1	0.1
Retail Trade	50.8	50.8	0.0	-0.4
Transp. & Utilities	25.1	25.1	0.0	-0.8
INFORMATION	3.5	3.5	0.0	-0.1
FINANCIAL ACTIVITIES	50.0	50.4	-0.4	-0.3
PROF. & BUS. SERVICES	64.8	64.8	0.0	0.9
PRIV. EDUCATION & HEALTH	85.4	85.7	-0.3	0.6
LEISURE & HOSPITALITY	52.7	52.3	0.4	-0.5
OTHER SERVICES	19.1	19.2	-0.1	0.0
GOVERNMENT	72.6	72.4	0.2	1.7
Federal Government	6.8	6.7	0.1	0.3
State Government	35.0	35.0	0.0	0.7
Local Government	30.8	30.7	0.1	0.7

† Annual changes are not seasonally adjusted.
Details may not add up due to rounding and seasonal adjustment.
Source: US Department of Labor, Bureau of Labor Statistics.

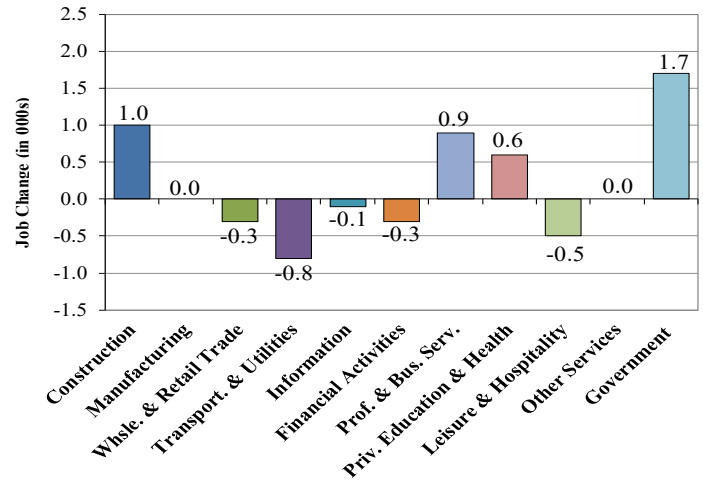
Office of Occupational and Labor Market Information

For data questions, contact Tom Dougherty (302) 761-8062

<https://lmi.delaware.gov/>

Delaware Over-the-Year Job Change

December 2023 – December 2024



Consumer Price Index

All Urban Consumers

	Percent Change to Dec. 2024 from:		
	Dec. 2023	Oct. 2024	Nov. 2024
US City Average	2.9	0.0	0.0
Phila.-Camden-Wilm.*	3.3	0.0	NA

* Data are published on a bi-monthly basis.

Delaware Annual Net Job Change

Annual Average 2003–2023

