

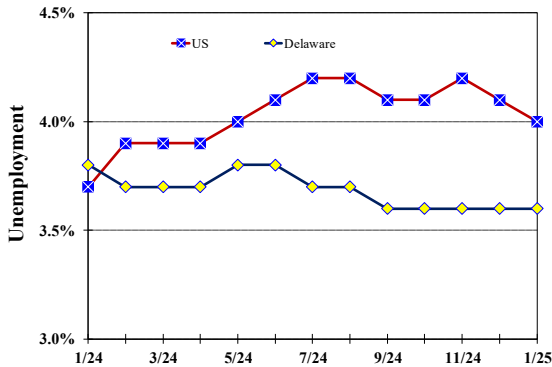
January 2025

Published March 14, 2025

Unemployment Rate

Delaware and US

January 2024 - January 2025



Monthly Commentary

On March 14th, OOLMI released its annual revisions to prior-year employment estimates. For 2024, Delaware's total Nonfarm, seasonally adjusted average annual jobs were revised higher by 100 from an original estimate of 488,900 to a revised total of 489,000. Private Education and Health Services had the largest industry-level revision, increasing from an original estimated annual average of 85,300 jobs to a revised total of 87,000, an increase of 1,700 jobs. The Government sector saw the second largest revision to its annual average number of jobs, falling from an original estimated total of 71,900 to a revised total of 70,300, a difference of -1,600 jobs. A comparison of original and revised employment for calendar years 2021 through 2024 is currently available on OOLMI's website at <https://lmi.delaware.gov>

Delaware Civilian Labor Force

Delaware Residents

	Jan. 2025	Dec. 2024	Jan. 2024
Civilian Labor Force	506,700	506,700	507,200
Employed	488,400	488,400	488,100
Unemployed	18,300	18,300	19,100
Unemployment Rate %	3.6	3.6	3.8
US Unemployment Rate %	4.0	4.1	3.7

Source: Delaware Dept. of Labor in cooperation with the US Dept. of Labor, Bureau of Labor Statistics.

Area Unemployment Rates (%)

	Jan. 2025	Dec. 2024	Jan. 2024
New Castle County	3.8	3.0	3.8
Wilmington	5.9	4.3	5.7
Newark	3.8	3.9	3.5
Middletown	3.5	2.7	3.5
Kent County	4.2	3.4	4.2
Dover	4.9	4.2	5.1
Sussex County	4.2	3.2	4.3

Note: Area rates are not seasonally adjusted.
Source: Delaware Dept. of Labor in cooperation with the US Dept. of Labor, Bureau of Labor Statistics.

Hours & Earnings

All Employee (Total Private)

	Jan. 2025	Dec. 2024	Jan. 2024
Weekly Earnings	\$1,028.09	\$1,057.80	\$1,012.15
Weekly Hours	31.8	32.8	31.6
Hourly Earnings	\$32.33	\$32.25	\$32.03

Source: Delaware Dept. of Labor in cooperation with the US Dept. of Labor, Bureau of Labor Statistics.

Office of Occupational and Labor Market Information

For data questions, contact Tom Dougherty (302) 761-8062

Delaware Labor Force Trends

Delaware's seasonally adjusted unemployment rate in January 2025 was 3.6%, unchanged from December 2024. There were 18,300 unemployed Delawareans in January 2025 compared to 19,100 in January 2024. The US unemployment rate was 4.0% in January 2025, down from 4.1% in December 2024. In January 2024, the US unemployment rate was 3.7%, while Delaware's rate was 3.8%.

In January 2025, seasonally adjusted nonfarm employment was 490,700, down from 490,800 in December 2024. Since January 2024, Delaware's total nonfarm jobs have increased by a net gain of 5,300, a rise of 1.1%. Nationally, jobs during that period increased by 1.4%.

Delaware Nonfarm Employment

Jobs at Delaware Locations
Seasonally Adjusted (in 000s)

INDUSTRY GROUP	Jan. 2025	Dec. 2024	Over the Month Change	Over the Year Change†
TOTAL NONAG. EMP.	490.7	490.8	-0.1	5.3
CONSTRUCTION	24.6	24.5	0.1	0.6
MANUFACTURING	26.7	26.8	-0.1	0.1
Durable Goods	8.0	8.1	-0.1	-0.3
Nondurable Goods	18.7	18.7	0.0	0.4
TRADE, TRANSP., & UTIL.	90.8	90.3	0.5	0.0
Wholesale Trade	12.8	12.7	0.1	0.1
Retail Trade	51.9	51.8	0.1	0.5
Transp. & Utilities	26.1	25.8	0.3	-0.6
INFORMATION	3.4	3.5	-0.1	-0.1
FINANCIAL ACTIVITIES	48.9	48.7	0.2	-0.5
PROF. & BUS. SERVICES	63.8	64.4	-0.6	-0.4
PRIV. EDUCATION & HEALTH	88.3	88.2	0.1	3.1
LEISURE & HOSPITALITY	54.0	53.8	0.2	0.2
OTHER SERVICES	19.4	19.7	-0.3	0.4
GOVERNMENT	70.8	70.9	-0.1	1.9
Federal Government	6.9	6.8	0.1	0.2
State Government	32.6	33.0	-0.4	0.5
Local Government	31.3	31.1	0.2	1.2

† Annual changes are not seasonally adjusted.
Details may not add up due to rounding and seasonal adjustment.
Source: US Department of Labor, Bureau of Labor Statistics.

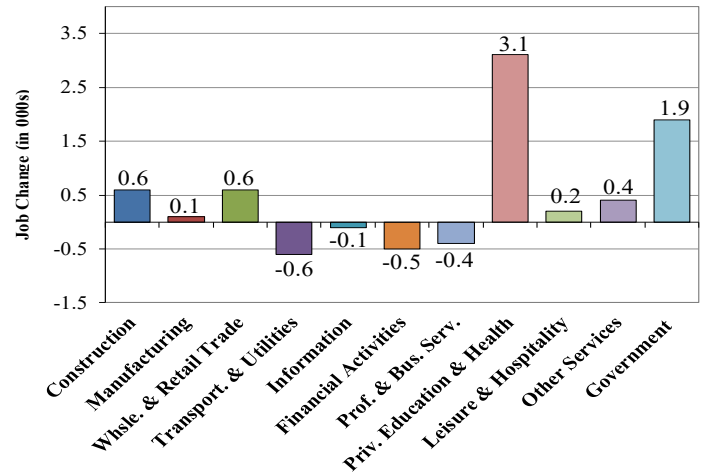
Office of Occupational and Labor Market Information

For data questions, contact Tom Dougherty (302) 761-8062

<https://lmi.delaware.gov/>

Delaware Over-the-Year Job Change

January 2024 – January 2025



Consumer Price Index

All Urban Consumers

	Percent Change to Jan. 2025 from:		
	Jan. 2024	Nov. 2024	Dec. 2024
US City Average	3.0	0.7	0.7
Phila.-Camden-Wilm.*	NA	NA	NA

* Data are published on a bi-monthly basis.

Delaware Annual Net Job Change

Annual Average 2004–2024

