

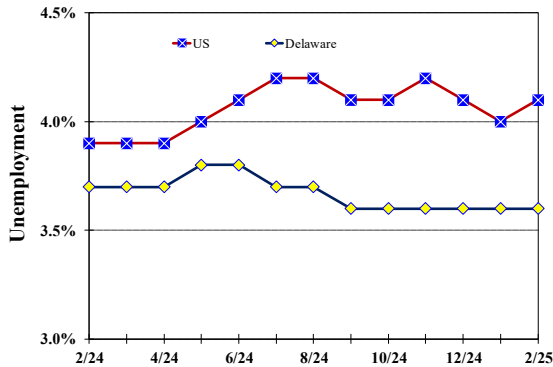
February 2025

Published March 28, 2025

Unemployment Rate

Delaware and US

February 2024 - February 2025



Monthly Commentary

In 2024, Delaware's revised seasonally adjusted annual unemployment rate of 3.7% tied with two other states (Idaho and Missouri) for the 28th lowest in the nation. It was 0.3 percentage points lower than the US annual average rate of 4.0 percent. Annual benchmarking lowered Delaware's annual average number of unemployed from an original estimate of 20,200 to a revised estimate of 18,700, a decline of 1,500 workers. In February, the Labor Force Participation rate set a record low at 59.0 percent. The number of residents in Delaware's labor force fell by 300 to 506,500, its lowest level since April 2023 when 505,700 residents were working or looking for work.

Delaware Civilian Labor Force

Delaware Residents

	Feb. 2025	Jan. 2025	Feb. 2024
Civilian Labor Force	506,500	506,800	506,800
Employed	488,000	488,500	487,900
Unemployed	18,500	18,300	18,900
Unemployment Rate %	3.6	3.6	3.7
US Unemployment Rate %	4.1	4.0	3.9

Source: Delaware Dept. of Labor in cooperation with the US Dept. of Labor, Bureau of Labor Statistics.

Area Unemployment Rates (%)

	Feb. 2025	Jan. 2025	Feb. 2024
New Castle County	3.9	3.8	3.8
Wilmington	5.4	5.9	5.3
Newark	4.5	3.8	4.3
Middletown	3.6	3.5	3.7
Kent County	4.4	4.2	4.2
Dover	4.9	4.9	5.1
Sussex County	4.4	4.2	4.3

Note: Area rates are not seasonally adjusted.
Source: Delaware Dept. of Labor in cooperation with the US Dept. of Labor, Bureau of Labor Statistics.

Hours & Earnings

All Employee (Total Private)

	Feb. 2025	Jan. 2025	Feb. 2024
Weekly Earnings	\$1,050.63	\$1,030.69	\$1,014.74
Weekly Hours	32.1	31.9	31.9
Hourly Earnings	\$32.73	\$32.31	\$31.81

Source: Delaware Dept. of Labor in cooperation with the US Dept. of Labor, Bureau of Labor Statistics.

Office of Occupational and Labor Market Information

For data questions, contact Tom Dougherty (302) 761-8062

Delaware Labor Force Trends

Delaware's seasonally adjusted unemployment rate in February 2025 was 3.6%, unchanged from January 2025. There were 18,500 unemployed Delawareans in February 2025 compared to 18,900 in February 2024. The US unemployment rate was 4.1% in February 2025, up from 4.0% in January 2025. In February 2024, the US unemployment rate was 3.9%, while Delaware's rate was 3.7%.

In February 2025, seasonally adjusted nonfarm employment was 493,400, up from 491,200 in January 2025. Since February 2024, Delaware's total nonfarm jobs have increased by a net gain of 6,400, a rise of 1.3%. Nationally, jobs during that period increased by 1.3%.

Delaware Nonfarm Employment

Jobs at Delaware Locations
Seasonally Adjusted (in 000s)

INDUSTRY GROUP	Feb. 2025	Jan. 2025	Over the Month Change	Over the Year Change†
TOTAL NONAG. EMP.	493.4	491.2	2.2	6.4
CONSTRUCTION	24.9	24.6	0.3	0.5
MANUFACTURING	26.9	26.7	0.2	0.1
Durable Goods	8.1	8.0	0.1	-0.3
Nondurable Goods	18.8	18.7	0.1	0.4
TRADE, TRANSP., & UTIL.	90.6	90.7	-0.1	0.6
Wholesale Trade	12.6	12.8	-0.2	0.0
Retail Trade	51.7	51.8	-0.1	0.7
Transp. & Utilities	26.3	26.1	0.2	-0.1
INFORMATION	3.6	3.4	0.2	0.0
FINANCIAL ACTIVITIES	49.0	48.9	0.1	-0.4
PROF. & BUS. SERVICES	64.4	63.9	0.5	-0.1
PRIV. EDUCATION & HEALTH	88.8	88.3	0.5	3.1
LEISURE & HOSPITALITY	54.1	53.9	0.2	-0.2
OTHER SERVICES	19.5	19.4	0.1	0.3
GOVERNMENT	71.6	71.4	0.2	2.5
Federal Government	6.7	6.8	-0.1	0.0
State Government	33.4	33.2	0.2	1.1
Local Government	31.5	31.4	0.1	1.4

† Annual changes are not seasonally adjusted.
Details may not add up due to rounding and seasonal adjustment.
Source: US Department of Labor, Bureau of Labor Statistics.

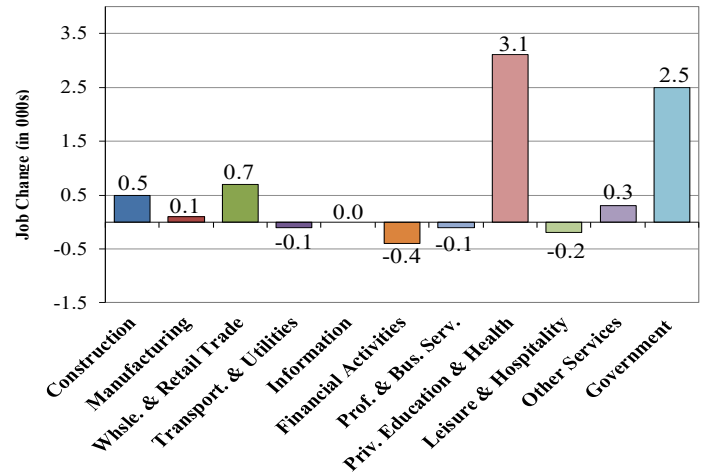
Office of Occupational and Labor Market Information

For data questions, contact Tom Dougherty (302) 761-8062

<https://lmi.delaware.gov/>

Delaware Over-the-Year Job Change

February 2024 – February 2025



Consumer Price Index

All Urban Consumers

	Percent Change to Feb. 2025 from:		
	Feb. 2024	Dec. 2024	Jan. 2025
US City Average	2.8	1.1	0.4
Phila.-Camden-Wilm.*	3.1	1.4	NA

* Data are published on a bi-monthly basis.

Delaware Annual Net Job Change

Annual Average 2004–2024

