

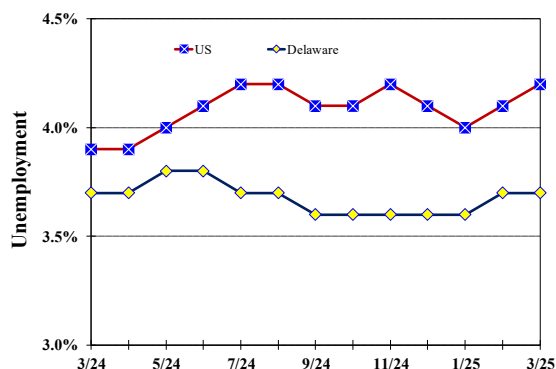
March 2025

Published April 21, 2025

Unemployment Rate

Delaware and US

March 2024 – March 2025



Monthly Commentary

The seasonally adjusted number of unemployed workers in Delaware rose by 400 to 18,900 in March, the largest over-the-month increase since March 2021 when the number of unemployed workers grew by 500. New entrants, those without any prior work history, likely drove the increase in the number of unemployed in March. The number of first-time job seekers represents 1/4 of all unemployed. Re-entrant job seekers, those returning to the labor force, have also increased in the past 12-month period and represent another 1/4 of the unemployed. Together, new entrants and re-entrant job seekers represent 1/2 of the unemployed.

Delaware Civilian Labor Force

Delaware Residents

	Mar. 2025	Feb. 2025	Mar. 2024
Civilian Labor Force	506,600	506,500	506,600
Employed	487,700	488,000	487,800
Unemployed	18,900	18,500	18,800
Unemployment Rate %	3.7	3.7	3.7
US Unemployment Rate %	4.2	4.1	3.9

Source: Delaware Dept. of Labor in cooperation with the US Dept. of Labor, Bureau of Labor Statistics.

Area Unemployment Rates (%)

	Mar. 2025	Feb. 2025	Mar. 2024
New Castle County	4.0	3.9	3.7
Wilmington	5.2	5.4	5.0
Newark	6.2	4.5	4.6
Middletown	3.6	3.6	3.6
Kent County	4.5	4.4	4.2
Dover	5.4	5.0	5.2
Sussex County	4.1	4.4	4.0

Note: Area rates are not seasonally adjusted.

Source: Delaware Dept. of Labor in cooperation with the US Dept. of Labor, Bureau of Labor Statistics.

Hours & Earnings

All Employee (Total Private)

	Mar. 2025	Feb. 2025	Mar. 2024
Weekly Earnings	\$1,067.31	\$1,053.20	\$996.48
Weekly Hours	32.8	32.1	32.0
Hourly Earnings	\$32.54	\$32.81	\$31.14

Source: Delaware Dept. of Labor in cooperation with the US Dept. of Labor, Bureau of Labor Statistics.

Office of Occupational and Labor Market Information

For data questions, contact Tom Dougherty (302) 761-8062

Delaware Labor Force Trends

Delaware's seasonally adjusted unemployment rate in March 2025 was 3.7%, unchanged from February 2025. There were 18,900 unemployed Delawareans in March 2025 compared to 18,800 in March 2024. The US unemployment rate was 4.2% in March 2025, up from 4.1% in February 2025. In March 2024, the US unemployment rate was 3.9%, while Delaware's rate was 3.7%.

In March 2025, seasonally adjusted nonfarm employment was 493,200, up from 492,600 in February 2025. Since March 2024, Delaware's total nonfarm jobs have increased by a net gain of 2,600, a rise of 0.5%. Nationally, jobs during that period increased by 1.2%.

Delaware Nonfarm Employment

Jobs at Delaware Locations
Seasonally Adjusted (in 000s)

INDUSTRY GROUP	Mar. 2025	Feb. 2025	Over the Month Change	Over the Year Change†
TOTAL NONAG. EMP.	493.2	492.6	0.6	2.6
CONSTRUCTION	24.6	24.9	-0.3	-0.1
MANUFACTURING	26.7	26.9	-0.2	0.0
Durable Goods	8.0	8.1	-0.1	-0.4
Nondurable Goods	18.7	18.8	-0.1	0.4
TRADE, TRANSP., & UTIL.	90.9	90.3	0.6	0.5
Wholesale Trade	12.6	12.6	0.0	-0.1
Retail Trade	52.1	51.7	0.4	1.0
Transp. & Utilities	26.2	26.0	0.2	-0.4
INFORMATION	3.6	3.5	0.1	0.0
FINANCIAL ACTIVITIES	48.9	49.0	-0.1	-0.7
PROF. & BUS. SERVICES	64.5	64.4	0.1	-0.6
PRIV. EDUCATION & HEALTH	89.5	89.0	0.5	3.3
LEISURE & HOSPITALITY	53.4	53.8	-0.4	-1.4
OTHER SERVICES	19.5	19.6	-0.1	0.0
GOVERNMENT	71.6	71.2	0.4	1.6
Federal Government	6.8	6.7	0.1	0.0
State Government	33.4	33.1	0.3	0.4
Local Government	31.4	31.4	0.0	1.2

† Annual changes are not seasonally adjusted.
Details may not add up due to rounding and seasonal adjustment.
Source: US Department of Labor, Bureau of Labor Statistics.

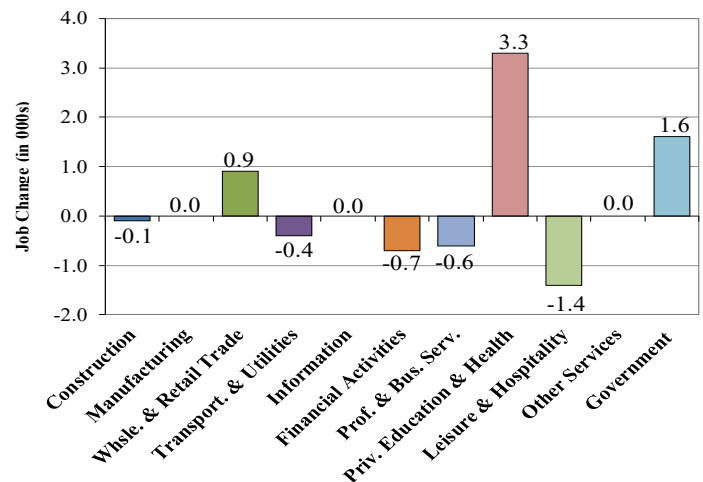
Office of Occupational and Labor Market Information

For data questions, contact Tom Dougherty (302) 761-8062

<https://lmi.delaware.gov/>

Delaware Over-the-Year Job Change

March 2024 – March 2025



Consumer Price Index

All Urban Consumers

	Percent Change to Mar. 2025 from:		
	Mar. 2024	Jan. 2025	Feb. 2025
US City Average	2.4	0.7	0.2
Phila.-Camden-Wilm.*	NA	NA	NA

* Data are published on a bi-monthly basis.

Delaware Annual Net Job Change

Annual Average 2004–2024

