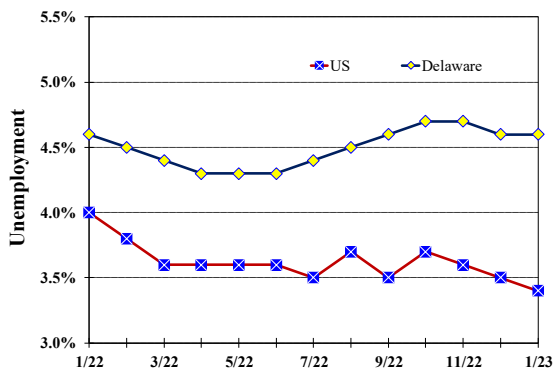


Unemployment Rate

Delaware and US

January 2022 - January 2023



Monthly Commentary

Delaware jobs were 14,600 higher in January than a year ago and increased 2,300 over-the-month of December. The Trade, Transportation, and Utility sector led over-the-year job growth with 4,000 new jobs. Increases in the Professional & Business Services and Financial Activities industries also grew by 2,400 and 2,200 jobs, respectively. Average hourly wages were \$30.50 in January, 0.97 cents or 3.3 percent higher than in January 2022. By comparison, the national consumer price index (CPI) rose 6.4 percent over-the-year, a percentage growth nearly twice as large as the growth in the average hourly wage.

Delaware Civilian Labor Force

Delaware Residents

	Jan. 2023	Dec. 2022	Jan. 2022
Civilian Labor Force	496,000	495,400	496,700
Employed	473,100	472,400	473,600
Unemployed	22,900	23,000	23,100
Unemployment Rate %	4.6	4.6	4.6
US Unemployment Rate %	3.4	3.5	4.0

Source: Delaware Dept. of Labor in cooperation with the US Dept. of Labor, Bureau of Labor Statistics.

Area Unemployment Rates (%)

	Jan. 2023	Dec. 2022	Jan. 2022
New Castle County	4.5	3.9	5.0
Wilmington	6.3	5.1	6.7
Newark	4.3	3.7	4.8
Kent County	5.2	4.7	5.8
Dover	6.3	5.8	7.8
Sussex County	5.0	4.5	5.5

Note: Area rates are not seasonally adjusted.

Source: Delaware Dept. of Labor in cooperation with the US Dept. of Labor, Bureau of Labor Statistics.

Hours & Earnings

All Employee (Total Private)

	Jan. 2023	Dec. 2022	Jan. 2022
Weekly Earnings	\$1,006.50	\$982.07	\$965.63
Weekly Hours	33.0	32.9	32.7
Hourly Earnings	\$30.50	\$29.85	\$29.53

Source: Delaware Dept. of Labor in cooperation with the US Dept. of Labor, Bureau of Labor Statistics.

Office of Occupational and Labor Market Information

For data questions, contact Tom Dougherty (302) 761-8062

Delaware Labor Force Trends

Delaware's seasonally adjusted unemployment rate in January 2023 was 4.6%, unchanged from December 2022. There were 22,900 unemployed Delawareans in January 2023 compared to 23,100 in January 2022. The US unemployment rate was 3.4% in January 2023, down from 3.5% in December 2022. In January 2022, the US unemployment rate was 4.0%, while Delaware's rate was 4.6%.

In January 2023, seasonally adjusted nonfarm employment was 479,300, up from 477,000 in December 2022. Since January 2022, Delaware's total nonfarm jobs have increased by a net gain of 14,600, a rise of 3.2%. Nationally, jobs during that period increased 3.3%.

Delaware Nonfarm Employment

Jobs at Delaware Locations
Seasonally Adjusted (in 000s)

INDUSTRY GROUP	Jan. 2023	Dec. 2022	Over the Month Change	Over the Year Change†
TOTAL NONAG. EMP.	479.3	477.0	2.3	14.6
CONSTRUCTION	24.1	24.0	0.1	0.8
MANUFACTURING	26.8	26.4	0.4	1.1
Durable Goods	9.7	9.5	0.2	0.3
Nondurable Goods	17.1	16.9	0.2	0.8
TRADE, TRANSP., & UTIL.	90.8	90.7	0.1	4.0
Wholesale Trade	12.8	12.6	0.2	0.8
Retail Trade	49.9	50.2	-0.3	0.1
Transp. & Utilities	28.1	27.9	0.2	3.1
INFORMATION	3.7	3.7	0.0	-0.1
FINANCIAL ACTIVITIES	49.9	50.2	-0.3	2.2
PROF. & BUS. SERVICES	67.1	66.1	1.0	2.4
PRIV. EDUCATION & HEALTH	79.3	79.2	0.1	0.3
LEISURE & HOSPITALITY	51.1	50.3	0.8	2.1
OTHER SERVICES	19.0	18.8	0.2	0.6
GOVERNMENT	67.5	67.6	-0.1	1.2
Federal Government	6.0	6.0	0.0	0.1
State Government	31.7	31.9	-0.2	-0.2
Local Government	29.8	29.7	0.1	1.3

† Annual changes are not seasonally adjusted.
Details may not add up due to rounding and seasonal adjustment.
Source: US Department of Labor, Bureau of Labor Statistics.

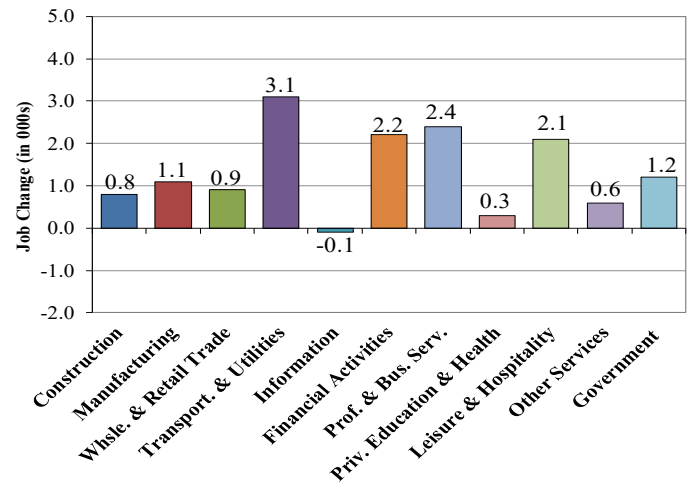
Office of Occupational and Labor Market Information

For data questions, contact Tom Dougherty (302) 761-8062

<https://labor.delaware.gov/divisions/oolmi/>

Delaware Over-the-Year Job Change

January 2022 – January 2023



Consumer Price Index

All Urban Consumers

	Percent Change to Jan. 2023 from:		
	Jan. 2022	Nov. 2022	Dec. 2022
US City Average	6.4	0.5	0.8
Phila.-Camden-Wilm.*	NA	NA	NA

* Data are published on a bi-monthly basis.

Delaware Annual Net Job Change

Annual Average 2002–2022

