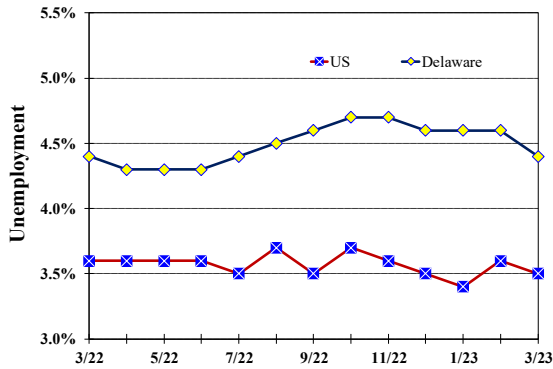


Unemployment Rate

Delaware and US

March 2022 - March 2023



Monthly Commentary

In March 2023, Delaware had 14,900 more seasonally adjusted nonfarm jobs than in February 2020, the last month preceding the recession caused by Coronavirus pandemic. The Trade, Transportation, and Utilities and Professional and Business Services sectors led the rebound in growth with 10,100 and 2,900 more jobs than before the pandemic, respectively. Some industries have yet to fully return to their pre-pandemic employment levels. The Private Education and Health Services industry has 2,200 fewer workers than in February 2020. The Leisure and Hospitality, Information, and Other Services sectors were also each lower by 1,100, 400 and 200 employees, respectively.

Delaware Civilian Labor Force

Delaware Residents

	Mar. 2023	Feb. 2023	Mar. 2022
Civilian Labor Force	496,600	495,900	498,100
Employed	474,600	473,300	476,200
Unemployed	22,000	22,600	21,900
Unemployment Rate %	4.4	4.6	4.4
US Unemployment Rate %	3.5	3.6	3.6

Source: Delaware Dept. of Labor in cooperation with the US Dept. of Labor, Bureau of Labor Statistics.

Area Unemployment Rates (%)

	Mar. 2023	Feb. 2023	Mar. 2022
New Castle County	4.1	4.3	4.3
Wilmington	5.7	6.1	5.8
Newark	5.1	4.4	4.8
Kent County	4.9	5.1	5.1
Dover	5.9	6.1	6.5
Sussex County	4.5	4.9	4.7

Note: Area rates are not seasonally adjusted.

Source: Delaware Dept. of Labor in cooperation with the US Dept. of Labor, Bureau of Labor Statistics.

Hours & Earnings

All Employee (Total Private)

	Mar. 2023	Feb. 2023	Mar. 2022
Weekly Earnings	\$990.39	\$1,002.26	\$970.22
Weekly Hours	32.6	32.7	32.9
Hourly Earnings	\$30.38	\$30.65	\$29.49

Source: Delaware Dept. of Labor in cooperation with the US Dept. of Labor, Bureau of Labor Statistics.

Office of Occupational and Labor Market Information

For data questions, contact Tom Dougherty (302) 761-8062

Delaware Labor Force Trends

Delaware's seasonally adjusted unemployment rate in March 2023 was 4.4%, down from 4.6% in February 2023. There were 22,000 unemployed Delawareans in March 2023 compared to 21,900 in March 2022. The US unemployment rate was 3.5% in March 2023, down from 3.6% in February 2023. In March 2022, the US unemployment rate was 3.6%, while Delaware's rate was 4.4%.

In March 2023, seasonally adjusted nonfarm employment was 483,400, up from 480,800 in February 2023. Since March 2022, Delaware's total nonfarm jobs have increased by a net gain of 13,500, a rise of 2.9%. Nationally, jobs during that period increased 2.7%.

Delaware Nonfarm Employment

Jobs at Delaware Locations
Seasonally Adjusted (in 000s)

INDUSTRY GROUP	Mar. 2023	Feb. 2023	Over the Month Change	Over the Year Change†
TOTAL NONAG. EMP.	483.4	480.8	2.6	13.5
CONSTRUCTION	24.8	24.3	0.5	1.0
MANUFACTURING	27.1	27.1	0.0	1.2
Durable Goods	10.1	10.1	0.0	0.6
Nondurable Goods	17.0	17.0	0.0	0.6
TRADE, TRANSP., & UTIL.	91.1	90.5	0.6	2.8
Wholesale Trade	12.6	12.6	0.0	0.6
Retail Trade	50.1	49.6	0.5	-0.1
Transp. & Utilities	28.4	28.3	0.1	2.3
INFORMATION	3.6	3.6	0.0	-0.1
FINANCIAL ACTIVITIES	50.7	50.1	0.6	2.9
PROF. & BUS. SERVICES	67.3	67.3	0.0	2.3
PRIV. EDUCATION & HEALTH	79.6	79.3	0.3	0.3
LEISURE & HOSPITALITY	52.0	51.6	0.4	1.1
OTHER SERVICES	18.6	18.5	0.1	-0.1
GOVERNMENT	68.6	68.5	0.1	2.1
Federal Government	6.2	6.2	0.0	0.3
State Government	32.4	32.3	0.1	0.6
Local Government	30.0	30.0	0.0	1.2

† Annual changes are not seasonally adjusted.
Details may not add up due to rounding and seasonal adjustment.
Source: US Department of Labor, Bureau of Labor Statistics.

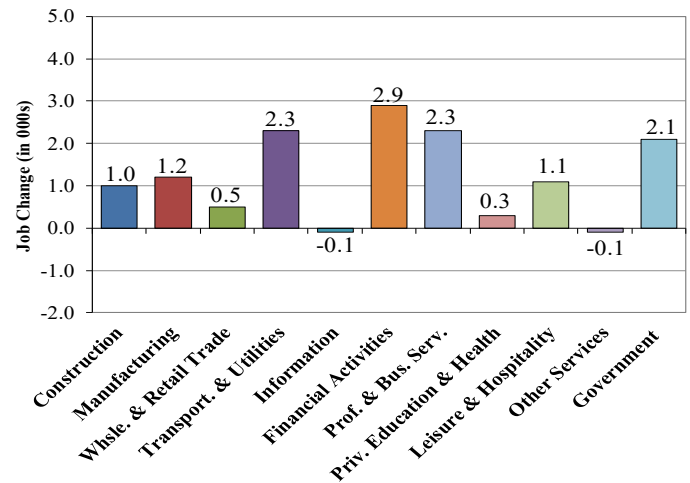
Office of Occupational and Labor Market Information

For data questions, contact Tom Dougherty (302) 761-8062

<https://labor.delaware.gov/divisions/oolmi/>

Delaware Over-the-Year Job Change

March 2022 – March 2023



Consumer Price Index

All Urban Consumers

	Percent Change to Mar. 2023 from:		
	Mar. 2022	Jan. 2023	Feb. 2023
US City Average	5.0	0.9	0.3
Phila.-Camden-Wilm.*	NA	NA	NA

* Data are published on a bi-monthly basis.

Delaware Annual Net Job Change

Annual Average 2002–2022

