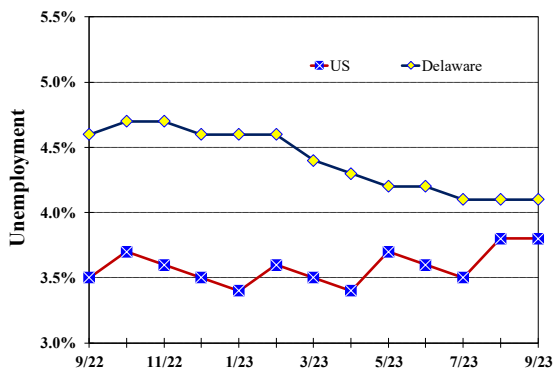


Unemployment Rate

Delaware and US

September 2022 – September 2023



Monthly Commentary

Delaware's seasonally adjusted nonfarm jobs were 486,800 in September, their highest level ever, surpassing the previous high of 486,200 jobs in May 2023. Nonfarm seasonally adjusted jobs were 18,300 or 3.9 percent higher than before the pandemic. The *Professional and Business Services* industry led the over-the-month increase in seasonally adjusted jobs at 2,200. The *Leisure and Hospitality* industry had the greatest over-the-year increase in not-seasonally adjusted jobs at 5,100. The largest over-the-month decline was in *State Government*, which fell 600 jobs. The *Trade, Transportation, and Utilities* and *Other Services* supersectors tied for the greatest over-the-year decreases, each with a loss of 700 not-seasonally adjusted jobs.

Delaware Civilian Labor Force

Delaware Residents

	Sept. 2023	Aug. 2023	Sept. 2022
Civilian Labor Force	507,700	505,500	495,500
Employed	486,700	484,700	472,800
Unemployed	21,000	20,800	22,700
Unemployment Rate %	4.1	4.1	4.6
US Unemployment Rate %	3.8	3.8	3.5

Source: Delaware Dept. of Labor in cooperation with the US Dept. of Labor, Bureau of Labor Statistics.

Area Unemployment Rates (%)

	Sept. 2023	Aug. 2023	Sept. 2022
New Castle County	4.1	4.7	4.1
Wilmington	6.2	7.5	5.6
Newark	3.6	4.4	4.1
Kent County	4.5	5.4	4.9
Dover	5.8	6.8	6.7
Sussex County	3.8	3.9	4.1

Note: Area rates are not seasonally adjusted.

Source: Delaware Dept. of Labor in cooperation with the US Dept. of Labor, Bureau of Labor Statistics.

Hours & Earnings

All Employee (Total Private)

	Sept. 2023	Aug. 2023	Sept. 2022
Weekly Earnings	\$992.90	\$992.55	\$993.18
Weekly Hours	32.3	32.5	32.8
Hourly Earnings	\$30.74	\$30.54	\$30.28

Source: Delaware Dept. of Labor in cooperation with the US Dept. of Labor, Bureau of Labor Statistics.

Office of Occupational and Labor Market Information

For data questions, contact Tom Dougherty (302) 761-8062

Delaware Labor Force Trends

Delaware's seasonally adjusted unemployment rate in September 2023 was 4.1%, unchanged from August 2023. There were 21,000 unemployed Delawareans in September 2023 compared to 22,700 in September 2022. The US unemployment rate was 3.8% in September 2023, unchanged from August 2023. In September 2022, the US unemployment rate was 3.5%, while Delaware's rate was 4.6%.

In September 2023, seasonally adjusted nonfarm employment was 486,800, up from 483,600 in August 2023. Since September 2022, Delaware's total nonfarm jobs have increased by a net gain of 11,900, a rise of 2.5%. Nationally, jobs during that period increased by 2.1%.

Delaware Nonfarm Employment

Jobs at Delaware Locations
Seasonally Adjusted (in 000s)

INDUSTRY GROUP	Sept. 2023	Aug. 2023	Over the Month Change	Over the Year Change†
TOTAL NONAG. EMP.	486.8	483.6	3.2	11.9
CONSTRUCTION	24.5	24.7	-0.2	1.2
MANUFACTURING	27.5	27.4	0.1	1.2
Durable Goods	9.9	10.0	-0.1	0.5
Nondurable Goods	17.6	17.4	0.2	0.7
TRADE, TRANSP., & UTIL.	90.4	90.7	-0.3	-0.7
Wholesale Trade	12.2	12.2	0.0	-0.3
Retail Trade	50.6	50.7	-0.1	0.4
Transp. & Utilities	27.6	27.8	-0.2	-0.8
INFORMATION	3.5	3.6	-0.1	-0.2
FINANCIAL ACTIVITIES	50.3	50.0	0.3	1.0
PROF. & BUS. SERVICES	68.8	66.6	2.2	1.5
PRIV. EDUCATION & HEALTH	81.1	80.7	0.4	2.4
LEISURE & HOSPITALITY	54.2	53.0	1.2	5.1
OTHER SERVICES	18.0	17.8	0.2	-0.7
GOVERNMENT	68.5	69.1	-0.6	1.1
Federal Government	6.5	6.4	0.1	0.5
State Government	31.6	32.2	-0.6	-0.3
Local Government	30.4	30.5	-0.1	0.9

† Annual changes are not seasonally adjusted.
Details may not add up due to rounding and seasonal adjustment.
Source: US Department of Labor, Bureau of Labor Statistics.

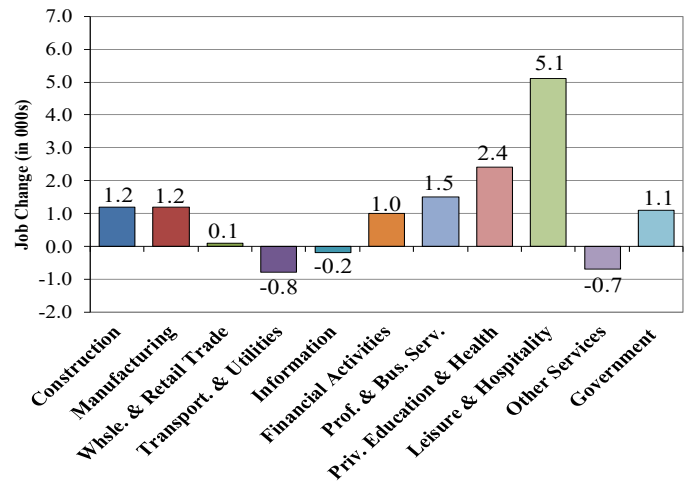
Office of Occupational and Labor Market Information

For data questions, contact Tom Dougherty (302) 761-8062

<https://labor.delaware.gov/divisions/oolmi/>

Delaware Over-the-Year Job Change

September 2022 – September 2023



Consumer Price Index

All Urban Consumers

	Percent Change to Sept. 2023 from:		
	Sept. 2022	July 2023	Aug. 2023
US City Average	3.7	0.7	0.2
Phila.-Camden-Wilm.*	NA	NA	NA

* Data are published on a bi-monthly basis.

Delaware Annual Net Job Change

Annual Average 2002–2022

